



Towing Vessel Safety Subchapter M Compliance



© 2016 American Bureau of Shipping. All rights reserved

Fully Integrated Subchapter M Services

Providing Solutions as a Trusted Advisor



Value Proposition

ABS offers a comprehensive portfolio of fully integrated solutions and services needed to help operators achieve and maintain compliance with Subchapter M regulations.

- US Coast Guard Subchapter M regulations now in place
- Approximately 6000 affected vessels
- Vessels must comply with most requirements as early as 20 July 2018

ABS National Network of Experience

ABS EXPERIENCE SERVING THE INLAND FLEET

NEARLY
1,300 CLASSED
TOWBOATS & TUGS



MORE THAN
3,100 CLASSED
BARGES

OVER
200 
SURVEYORS & AUDITORS
IN THE UNITED STATES

30 OFFICES
ACROSS THE US

18 OFFICES
ALONG THE
US GULF &
INLAND WATERWAYS



TOWING VESSEL CENTER OF EXCELLENCE
IN PADUCAH, KY SPECIALIZING IN
SUBCHAPTER M COMPLIANCE

NS WORKBOAT

TAILORED FLEET
MANAGEMENT

FOR INLAND
INDUSTRY



INDUSTRY LEADING
HUMAN FACTORS
& ERGONOMIC

SERVICES TO AID
COMPLIANCE



OVER
10,000

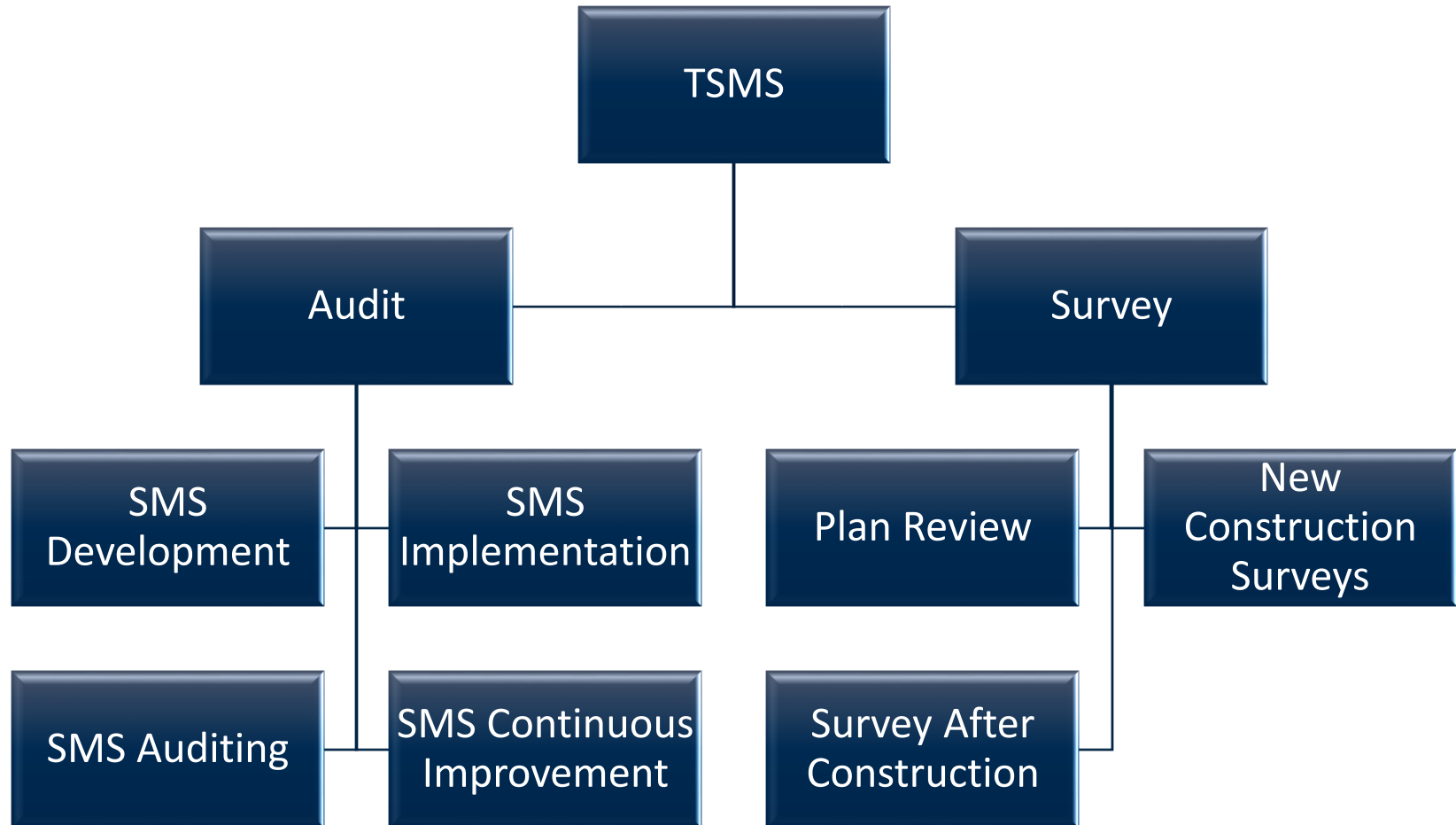
REVIEWS PER YEAR ON
BEHALF OF **USCG**

Subchapter M Current Landscape

- Final Release July 20th, 2016
- AWO auditing agreement Oct 2016
- New vessels with keel laid after July 20th, 2017 are required to comply with all requirements to obtain USCG COI
- Existing Vessels need to comply with most requirements by July 20th, 2018
- COI implementation begins July 20th, 2018 for existing vessels



Compliance Solutions



Compliance Solutions

ISM Audit

- ISM Manual Review
 - Initial – One Time
- ISM DOC Audit
 - Annually
- ISM SMC (Vessel) Audit
 - Two (2) Times in 5 Years

RCP/TSMS Audit

- RCP/TSMS Review and Approval
 - Initial – One Time
- RCP/TSMS Company Audit
 - Two (2) Times in 5 Years
- RCP/TSMS Vessel Audit
 - Once in 5 years

TPO Surveys

- Annual/Drydock/Internal Structure Exam (ISE) – Surveys
- Survey Scheduling and Planning Tools
- Plan Review for Major Modifications and New Construction
- Stability and Damage Assessment
- Training
- Design Optimization
- Safety Studies/Programs

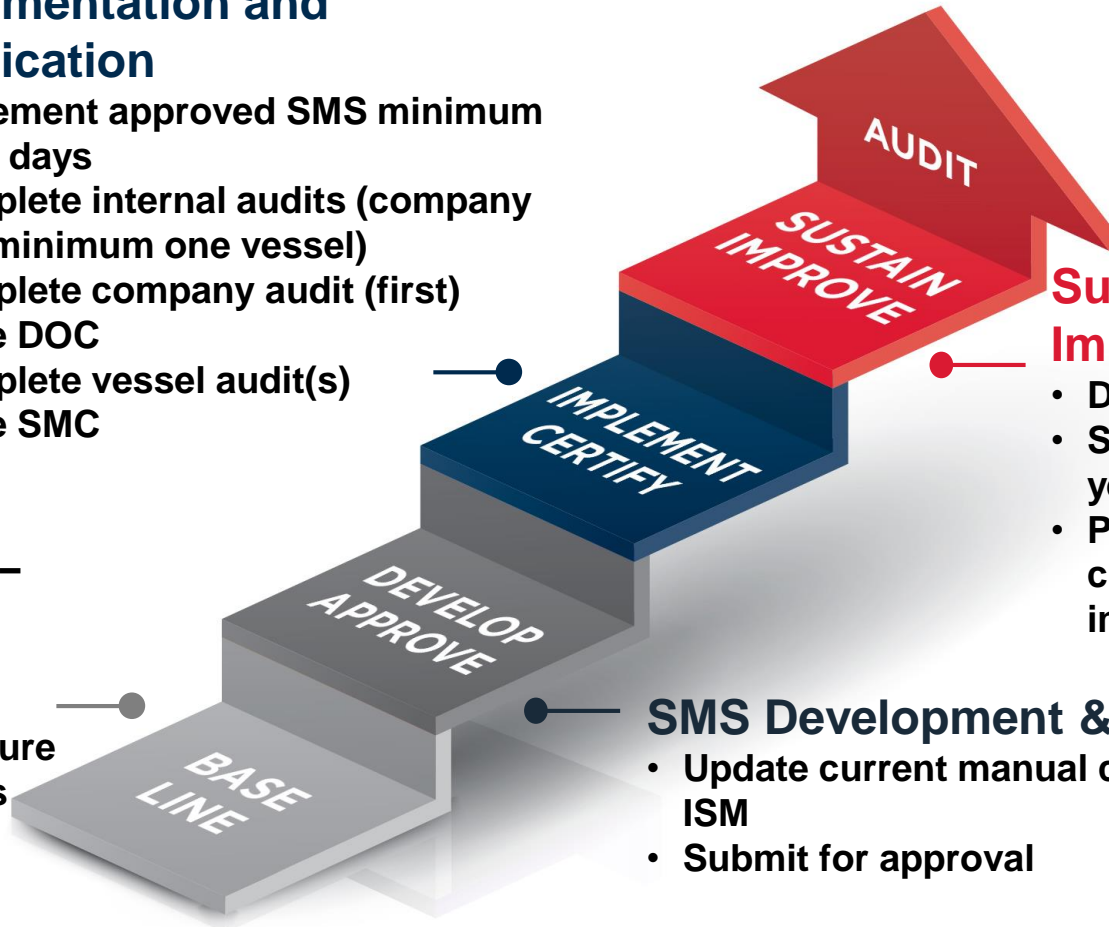
TSMS – Audit (ISM)

Implementation and Certification

- Implement approved SMS minimum of 90 days
- Complete internal audits (company and minimum one vessel)
- Complete company audit (first)
- Issue DOC
- Complete vessel audit(s)
- Issue SMC

Base Line

- Gap Analysis – complete
- Determine management system structure (DOC) options



Sustain Program/Drive Improvements

- DOC Audit (annual)
- SMC Audit (twice in 5 years)
- Policy and process changes (continual improvement)

SMS Development & Approval

- Update current manual corrected for ISM
- Submit for approval

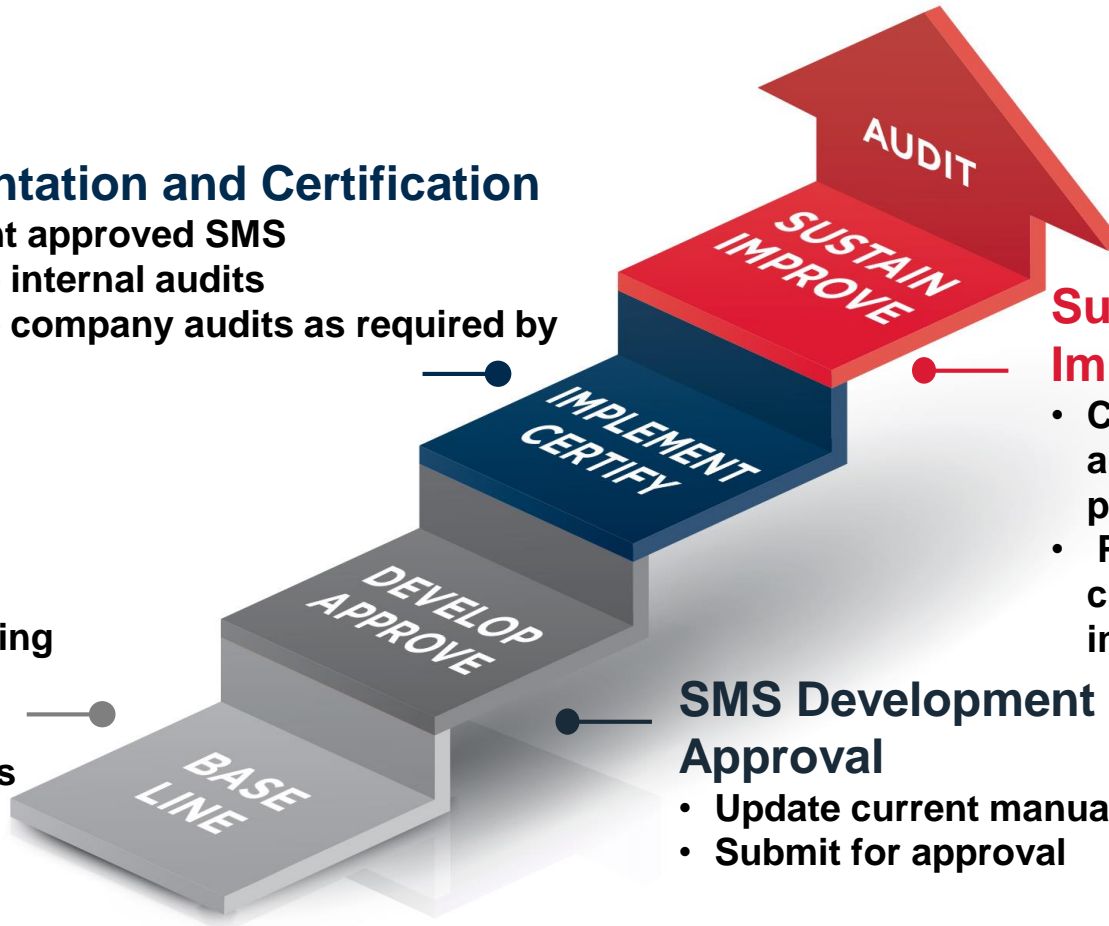
TSMS – Audit (RCP)

Implementation and Certification

- Implement approved SMS
- Complete internal audits
- Complete company audits as required by program

Base Line

- Review existing program
 - Gap analysis



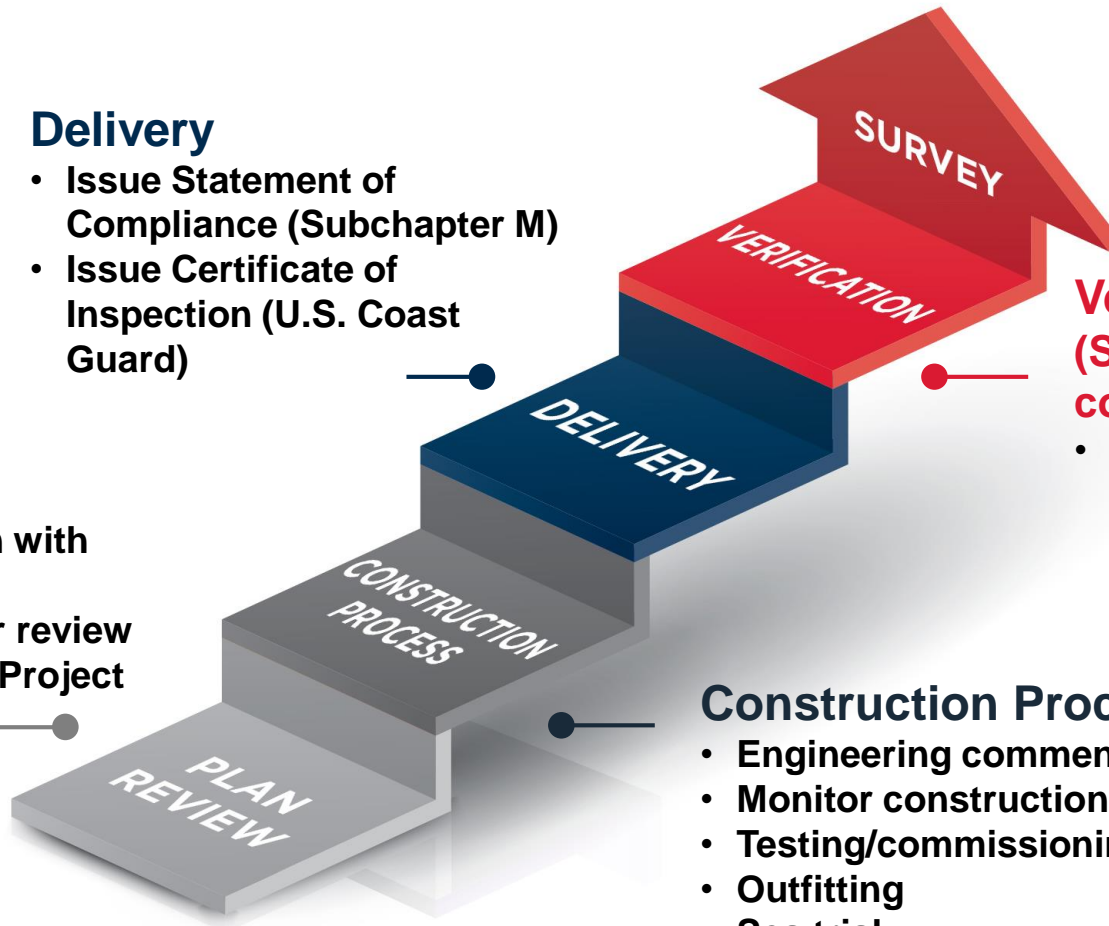
TSMS – Survey

Delivery

- Issue Statement of Compliance (Subchapter M)
- Issue Certificate of Inspection (U.S. Coast Guard)

Plan Review

- Project initiation with Shipyard
- Submit plans for review
- Plan approval – Project kick off at yard



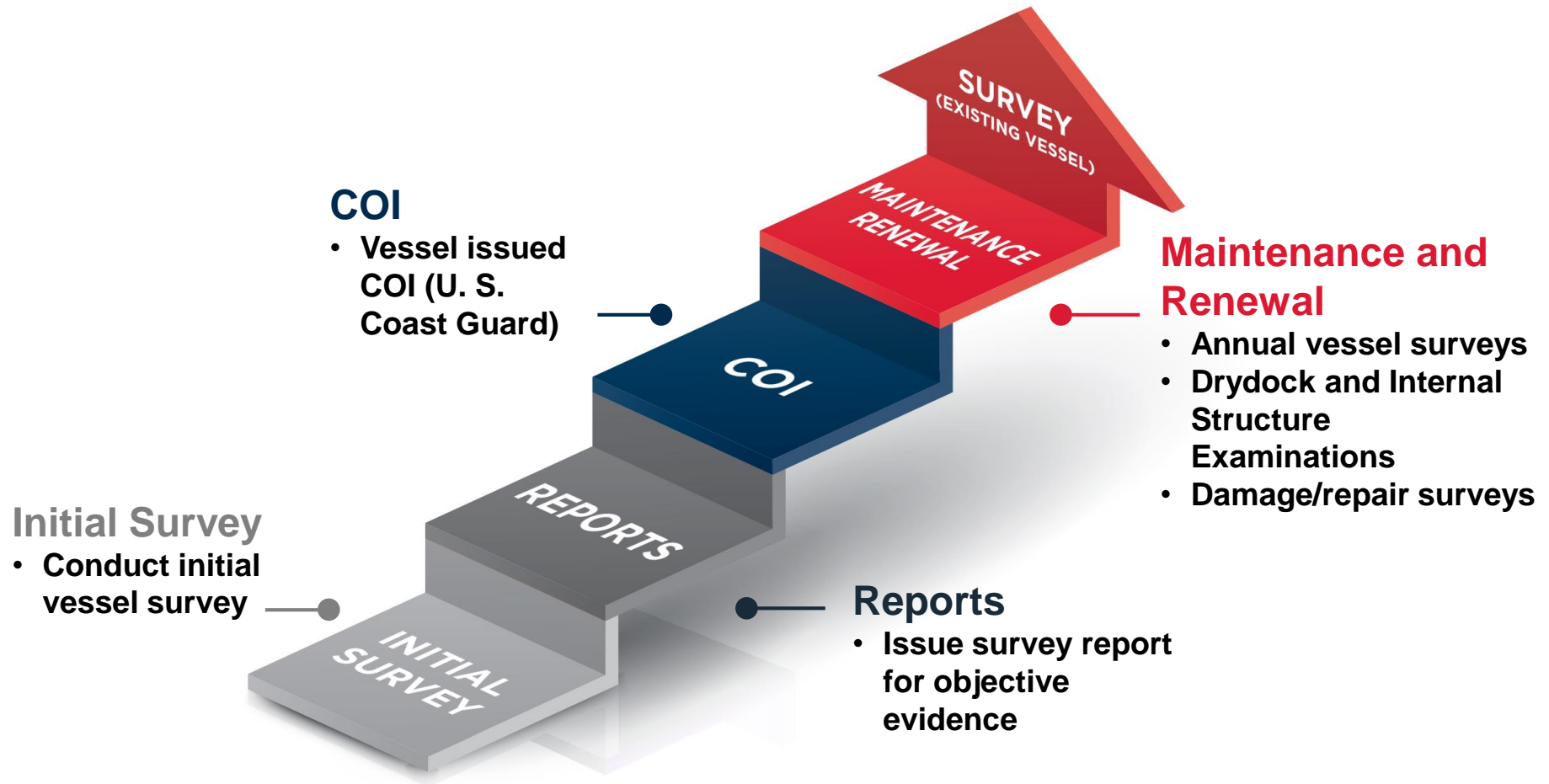
Verification (Survey after construction)

- Surveys after construction – verify compliance

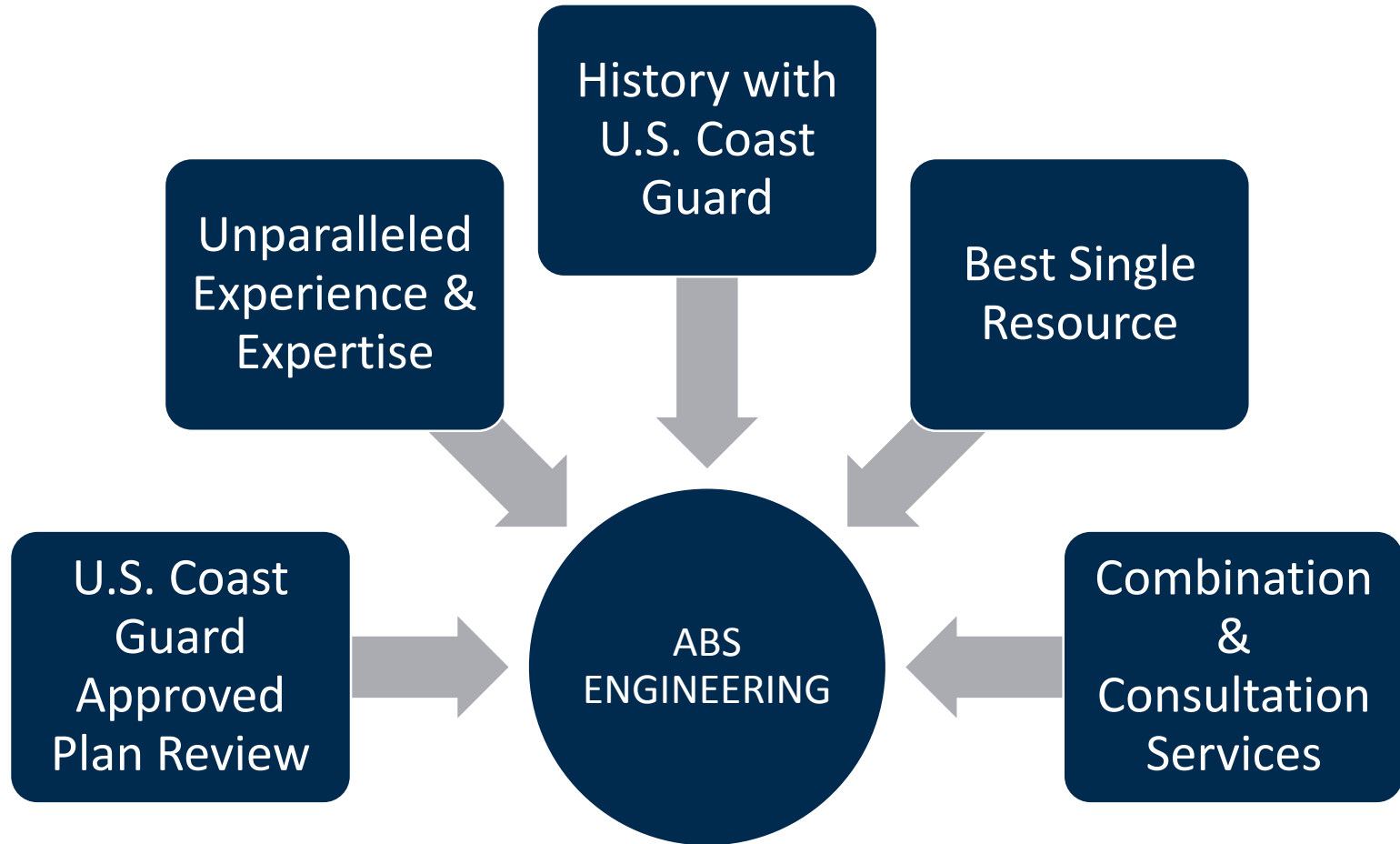
Construction Process

- Engineering comments closed
- Monitor construction
- Testing/commissioning
- Outfitting
- Sea trial

TSMS – Survey (Existing Vessel)



ABS Engineering - New Construction



ABS Type Approval Program

Product Design Assessment (PDA)

ABS Engineers verify product compliance with manufacture's specifications, applicable ABS Rules and national or international standards including Subchapter M.



Manufacturer Assessment (MA)

ABS Surveyors confirm that the manufacturing facility follows quality process and is capable of manufacturing the product consistently in accordance with the PDA

- Provides Original Equipment Manufactures (OEMs) Subchapter M product certification process
- OEM's can differentiate their products as SubM compliant

ABS Reach and Support





Thank You

www.eagle.org

For more information contact:

Josh LaVire

1 (281) 877-6565

SubchapterM@eagle.org